

SMI STANDARD POLECAT

The SMI® Standard PoleCat is a simple nozzle fan snowmaker that excels in a wide range of weather conditions. Offered in a variety of custom tower and carriage mounts, the Standard PoleCat Snowmaker can be powered by a piston or vane compressor, or by hill air feed.

Available in manual or automatic mode, the versatile PoleCat uses a 10 HP (7.5 kW) or a 15 HP (11 kW) fan and 18 spray nozzles that are customized to achieve water flows to suit specific climates. Nucleated with a central six-jet nozzle, water flow is easily controlled by three heated, self-draining valves.

The Standard PoleCat is reliable and simple to operate and maintain—an excellent all-around performer for virtually any snowmaking conditions.

Call SMI or your local representative today for more information or visit us at snowmakers.com





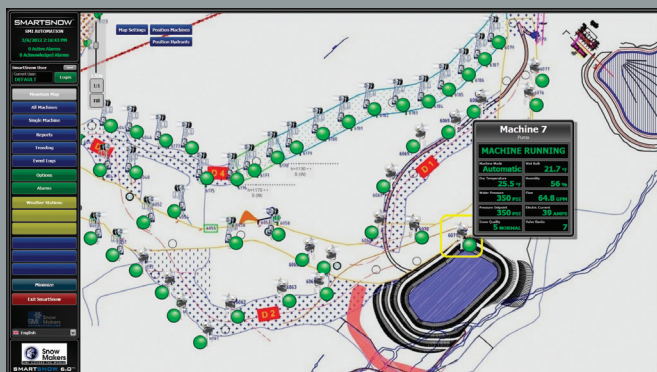
TECHNICAL SPECIFICATIONS

STANDARD POLECAT FLEXIBILITY AND PERFORMANCE

The Standard PoleCat is our mid-size snow machine for medium throw with many flexible automation options including remote control and full automatic modes of operation for individual standalone machines or when connected to a complete network.



SMI's SmartSnow™ Automation & Control software is flexible and customizable and offers proven communication options, accurate weather measurement, supporting equipment and instrumentation, integrated auxiliary equipment, and service that is second to none.



- Mount: 10.5' or 15.5' (3.2 m or 4.7 m) tower or 3 wheel painted A-frame carriage or 3 wheel galvanized steel carriage with Snowcat lifting brackets
- Electrical: Three phase
- Fan: Horsepower: 15 HP (11 kW) or 10 HP (7.5 kW)
Fan Speed: 1760 rpm at 480V/60Hz or 1450 rpm at 400V/50Hz
Propeller: SMI patented aluminum
Screen: Stainless steel
- Compressor:
5.5 HP (4.8 kW) Atlas Copco, 21.4 cfm at 100 psi (10.1 l/s at 7 bar)
or 5 HP (3.7 kW) Hydrovane, 22 cfm at 100 psi (10.4 l/s at 7 bar)
or 10 HP (7.5 kW) Hydrovane, 43.3 cfm at 100 psi (20.5 l/s at 7 bar)
- Heating: 225 W
Optional spray nozzle heater 500 (at 400V/50Hz), 1300 W (at 480V/60Hz) 900 W Additional if Hill Air
- Water Pressure: 100-500 psi (7-35 bar)
- Water Connection: Customer's choice
- Valves: Three self-draining heated three-way valves
- Nozzles: Always on banks: 6 nozzles
Valve 1: 4 nozzles
Valve 2: 4 nozzles
Valve 3: 4 nozzles
Total: 18 nozzles
- Nucleators: Central nozzle with six jets
- Filtration System: Stainless steel filter with easy to use, washable 30 mesh screen
- Electrical Cord: Tower 40' (12 m) Carriage 100' (30 m)
- Rotation: 360° horizontal rotation, -10° to 60° elevation adjustment
- Oscillator: Optional for tower and galvanized carriage 70° arc of rotation



Snow Machines, Inc.
1512 North Rockwell Dr.
Midland, MI 48642
Tel: +1-989-631-6091
Toll Free: +1-800-248-6600
snowmakers.com