

# SMI SUPER POLECAT

The SMI Super PoleCat Snowmaker and Snowtower are SMI's big throw simple nozzle fan snowmaking products that excel in all temperature conditions. The Super PoleCat is offered with a piston or vane compressor or hill air feed, in manual or automatic, and in a variety of custom tower and carriage mounts.

The Super PoleCat uses a 20HP (15 kW) or 25HP (18 kW) fan for a big throw and 30 nozzles that you can customize to achieve water flows specific to your climate. These 30 nozzles are nucleated with a single central six jet nucleator nozzle. Water adjustment is easy with four heated self draining valves.

The PoleCat is simple to operate and maintain and an excellent all around performer for all conditions. Another great snowmaking value from SMI.

Call SMI or your local representative today for more information or visit us at [snowmakers.com](http://snowmakers.com).





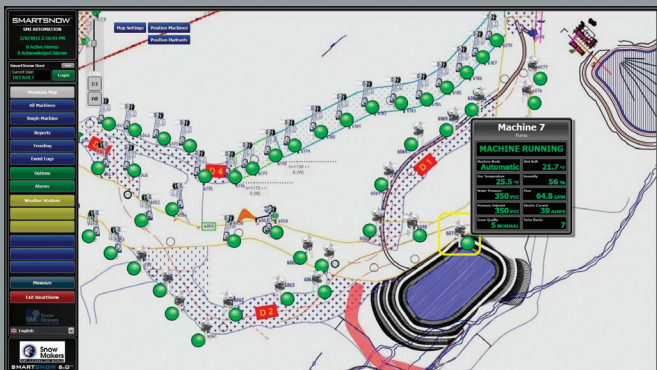
# TECHNICAL SPECIFICATIONS

## SUPER POLECAT FLEXIBILITY AND PERFORMANCE

The Super PoleCat is a high performance big throw snow machine with many flexible automation options including remote control and full automatic modes of operation for either individual standalone machines or when connected to a complete network.



SMI's SmartSnow™ Automation & Control software is flexible and customizable and offers proven communication options, accurate weather measurement, supporting equipment and instrumentation, integrated auxiliary equipment, and service that is second to none.



- Mount: 10.5' (3.2 m) or 15.5' (4.7 m) tower or 3 wheel painted A-frame carriage or 3 wheel galvanized steel carriage with Snowcat lifting brackets
- Electrical: Three phase
- Fan: 20 HP (15 kW):  
1760 rpm (1760 U/m) at 480V/60Hz  
1450 rpm (1450 U/m) at 400V/50Hz  
Fan: 25 HP (18 kW):  
1760 rpm (1760 U/m) at 480V/60Hz  
1450 rpm (1450 U/m) at 400V/50Hz  
Propeller: SMI 7 blade aluminum  
Screen: stainless steel
- Compressor:  
5.5 HP (4.8 kW) Atlas Copco, 21.4 cfm at 100 psi (10.1 l/s at 7 bar)  
or 5 HP (3.7 kW) Hydrovane, 22 cfm at 100 psi (10.4 l/s at 7 bar)  
or 10 HP (7.5 kW) Hydrovane, 43.3 cfm at 100 psi (20.5 l/s at 7 bar)  
or hill air, 60-100cfm at 80psi
- Heating: 300 W  
Optional spray manifold heater 1300 W  
900 W additional if hill air
- Water Pressure: 100 – 750 psi (7 – 50 bar)
- Water Connection: Customer's choice
- Valves: 4 self-draining heated 3-way valves
- Nozzles: Always on banks: 10 nozzles  
Valve 1: 6 nozzles  
Valve 2: 4 nozzles  
Valve 3: 5 nozzles  
Valve 4: 5 nozzles  
Total: 30 nozzles
- Nucleators: Central nozzle with six jets
- Filtration System: Stainless steel filter with washable 30 mesh (595µm) screen
- Electrical Cord: Tower: 40' (12 m), Carriage: 100' (30 m)
- Rotation: 360° horizontal rotation – 10° to 60° elevation adjustment
- Oscillator: optional for tower and galvanized carriage, 70° arc of rotation



Snow Machines, Inc.  
1512 North Rockwell Dr.  
Midland, MI 48642  
Tel: +1-989-631-6091  
Toll Free: +1-800-248-6600  
snowmakers.com