

**SIMPLY
RED**

PistenBully 800



KÄSSBOHRER GELÄNDEFahrZEUG AG



**SIMPLY
STRONG**

**SIMPLY
EFFICIENT**

**SIMPLY
RED**



**SIMPLY
RED**

Dimensions

SIMPLY STRONG

- ✓ **9.5 m length**
- ✓ **4.2 m** width over tracks
- ✓ **3,30 m** height
- ✓ up to **5.95 m** working width
- ✓ **400 liters** tank capacity
- ✓ **15.000 kg only...**



9,5 m



**SIMPLY
RED**

SIMPLY EFFICIENT

Higher grooming speed due to higher engine power

- ✓ **Up to 7 % higher surface output**
- ✓ **40% higher pushing performance**

PistenBully 800 - Largest diesel engine

**SIMPLY
RED**

MAN D38

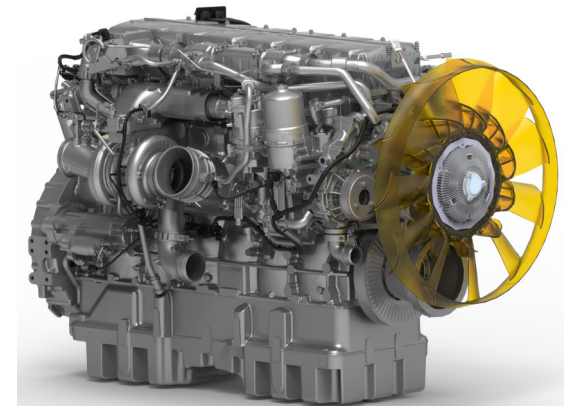
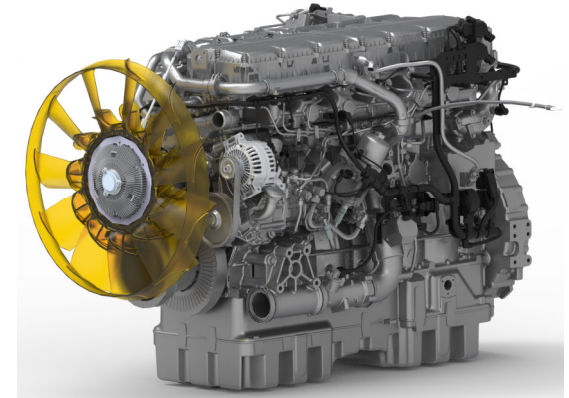


- + Emission standard **EU Stage V**
- + **525 Nm additional torque** (compared to PB 600 Polar)
- + **6 cylinders**, displacement **15.3 liters**
- + **2,900 Nm** at 1,100 rpm (**low-speed concept**)
- + **450 kW / 612 hp** at 1,500 rpm

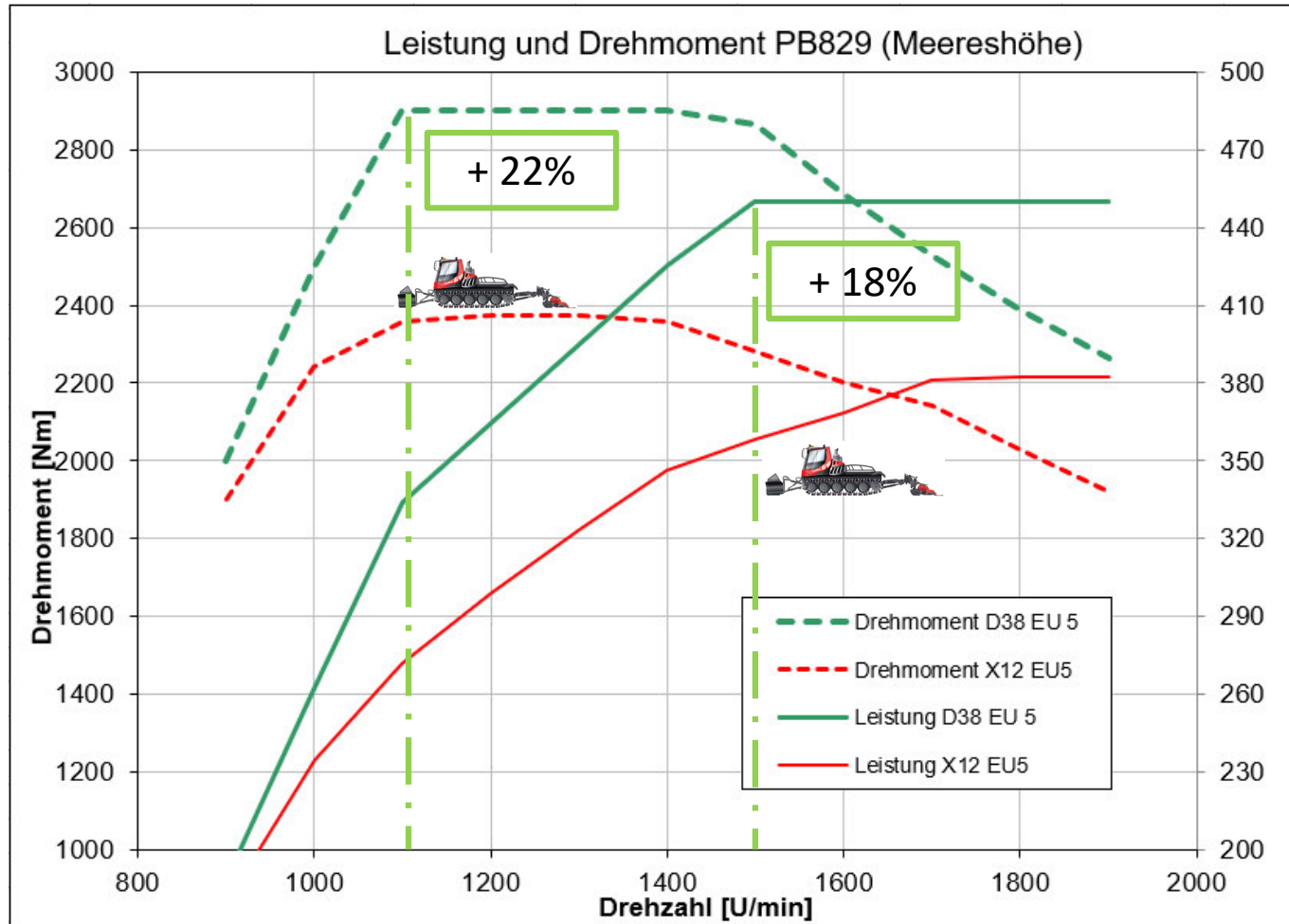
With minimum tare weight
→ **Most powerful snow groomer**

- + Tank capacity:
 - Diesel: **400 liters** (Ultra low Sulphur Diesel)
 - AdBlue (DEF): **44 liters** (range approx. 1.5 tank fillings)

Larger tank volume
→ **More range**



PistenBully 800 - Performance curves

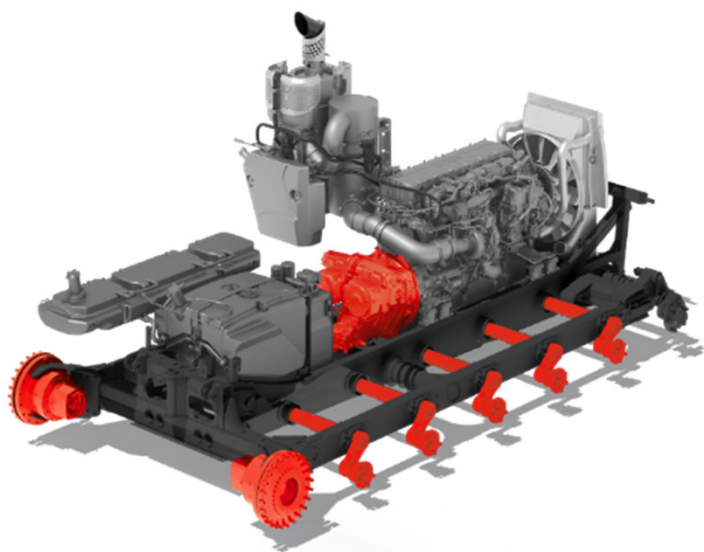




**SIMPLY
RED**

Traction drive

SIMPLY STRONG



Lowest operating costs - low speed concept

- ✓ **Optimized transmission ratio**
- ✓ **13 % higher driving speed at the main operating points of the diesel engine (compared PB 600 Polar)**
- ✓ **1,150 rpm instead of 1,300 rpm**
- ✓ **Same speed at lower drive**
- ✓ **Highest fuel efficiency**
- ✓ **Reduced noise**
- ✓ **Reduced drive train losses – efficiency hydr. pumps**
- ✓ **6.7 % higher drive torques at the drive wheel (compared PB 600 Polar) for maximum pushing force**



**SIMPLY
RED**

Performance Combi Tracks

SIMPLY **STRONG**

- ✓ **Durability** due to even force distribution in **six** belts
- ✓ **Best traction** due to 135 mm pitch
- ✓ **Maximum cleat stability** due to 120 × 45 mm cross-section





**SIMPLY
RED**

Drive

SIMPLY STRONG

- ✓ **Stable running behavior** due to fifth running axle
- ✓ **Best traction** due to six track cleats more in the snow
- ✓ **Agile steering behavior** thanks to optimized drive settings



**SIMPLY
RED**

SIMPLY EFFICIENT

Faster in operation and with a full blade



Wider All-WayBlade
with 5.0 m - 5.95 m



8 % bigger blade compared
to a Polar blade



Faster in pushing

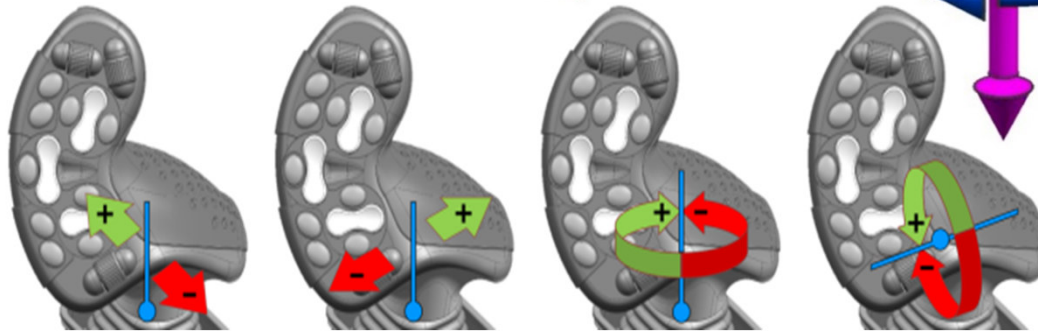
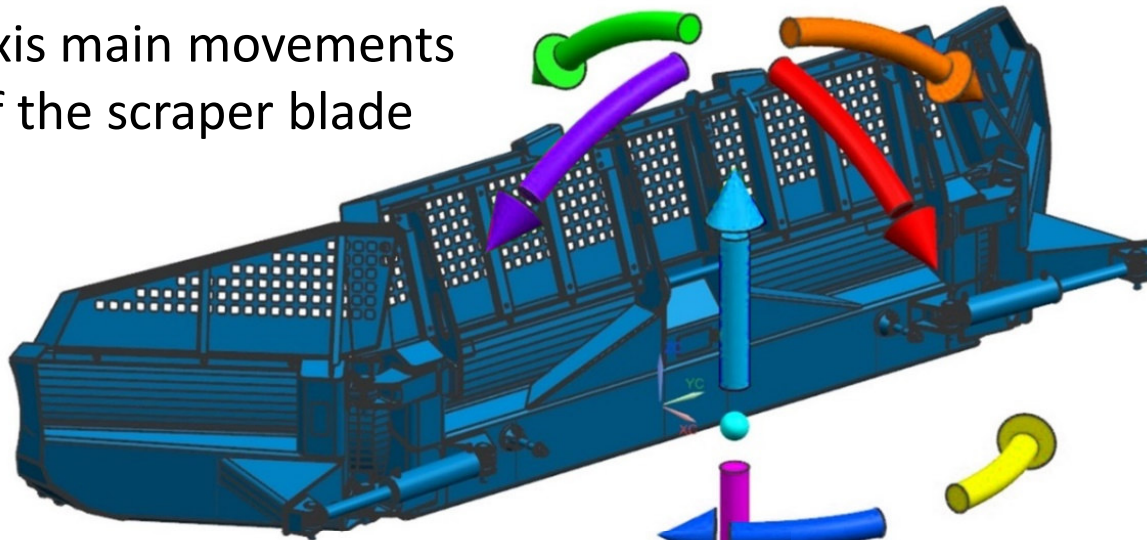


PistenBully 800 - Operating concept intuitive joystick

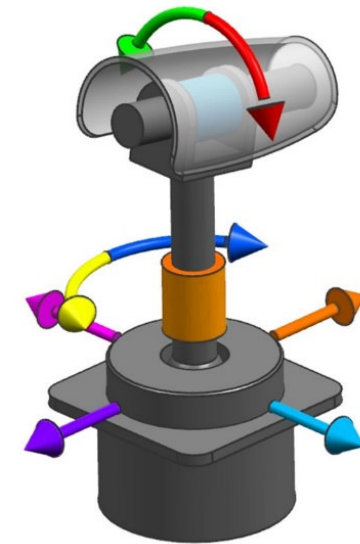


All 4 main movements can be performed simultaneously

4-axis main movements of the scraper blade



PATENT



4-axis main movements of the joystick



**SIMPLY
RED**

SIMPLY EFFICIENT

**Comparison of pushing
performance**



Biggest blade on the market



**Best maneuverability in the
push alley**



40% more snow volume

24 m³

+ 40 %

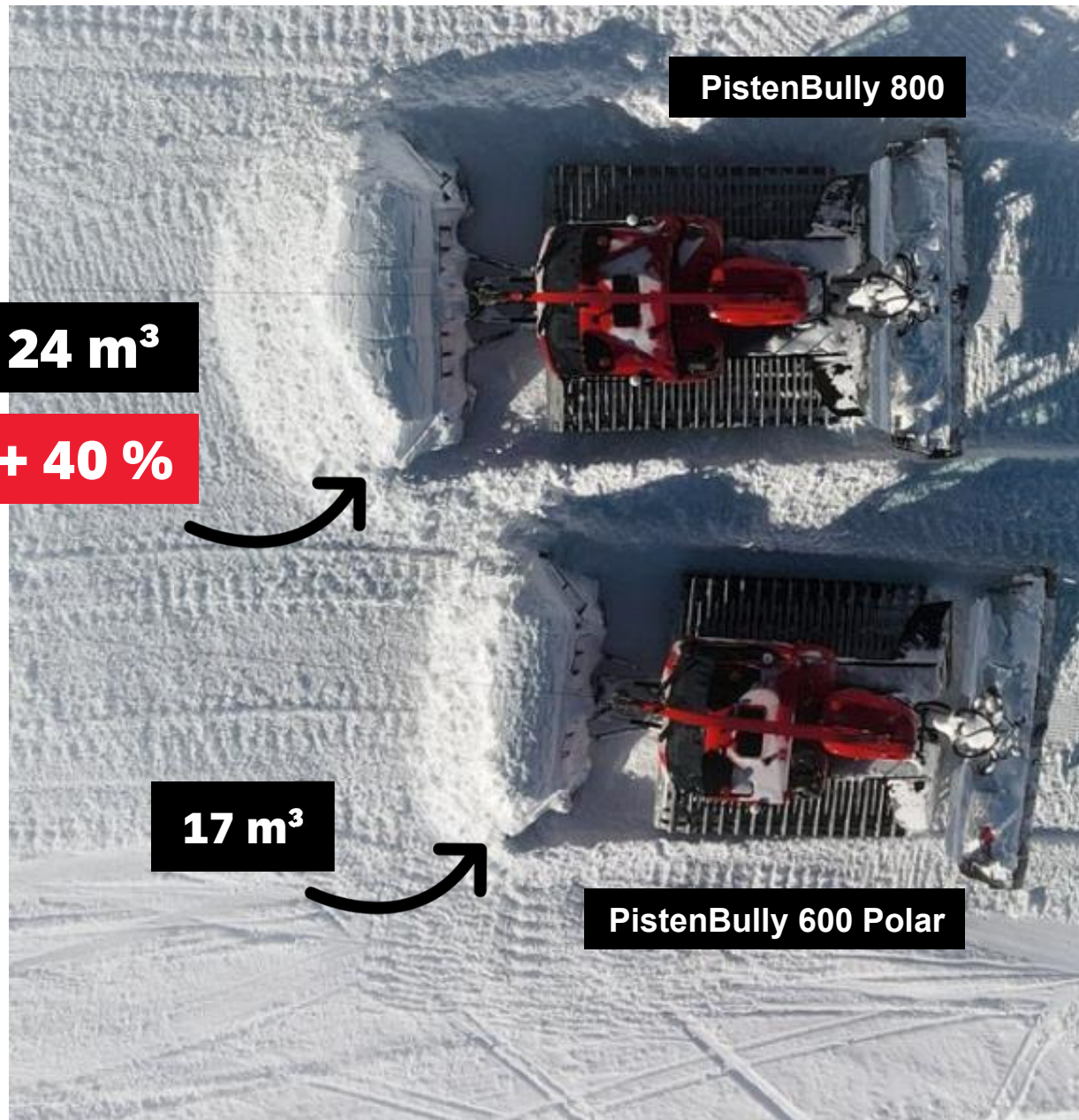


17 m³



PistenBully 800

PistenBully 600 Polar





**SIMPLY
RED**

SIMPLY EFFICIENT

Facts of pushing performance and do not forget – the PB 600 Polar is a good one



40 % higher snow removal



345 m³ in 10 minutes



-9 % fuel consumption per cubic meter of snow

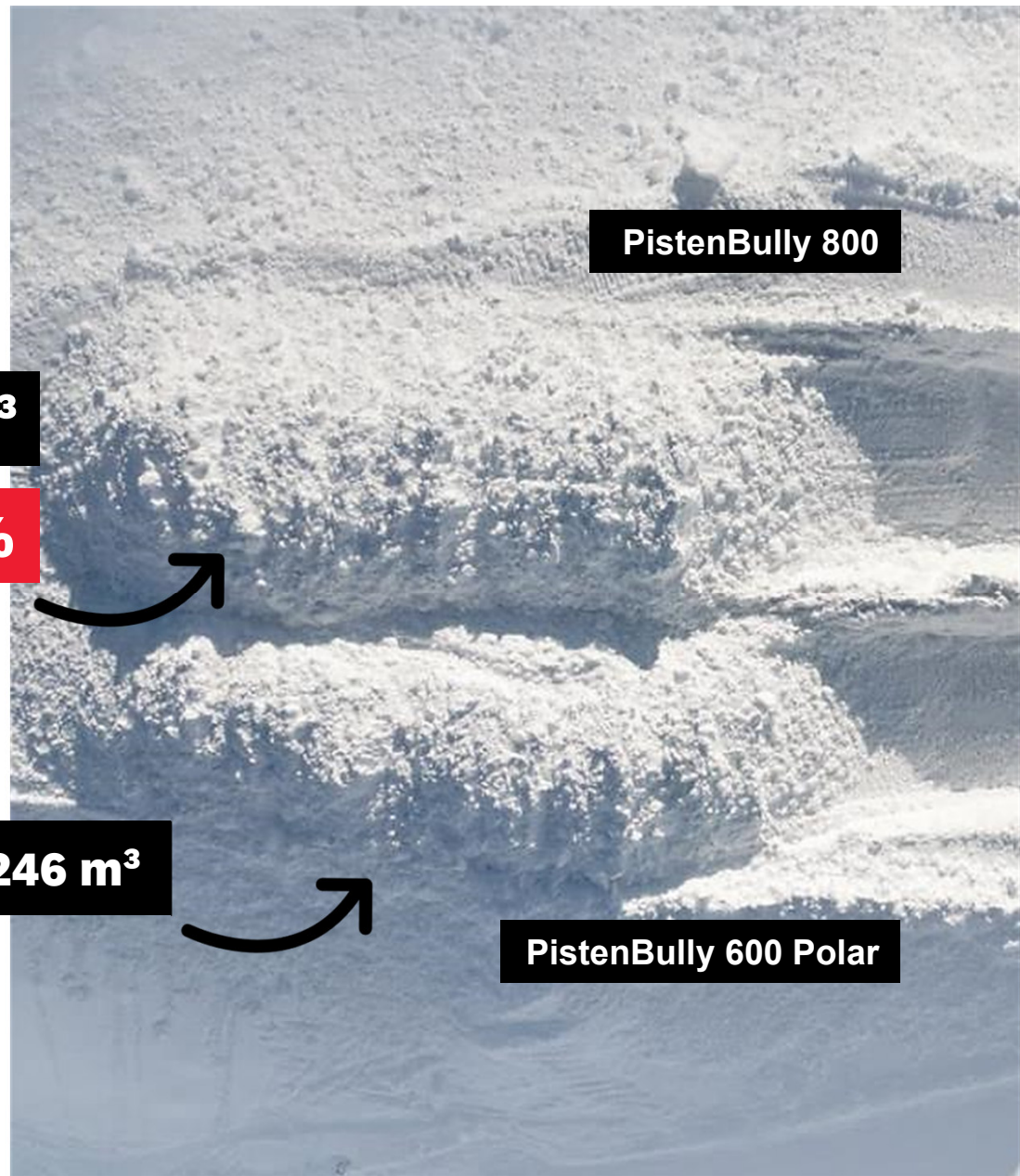
345 m³

+ 40 %

246 m³

PistenBully 800

PistenBully 600 Polar





**SIMPLY
RED**

SIMPLY EFFICIENT

How we check it out!



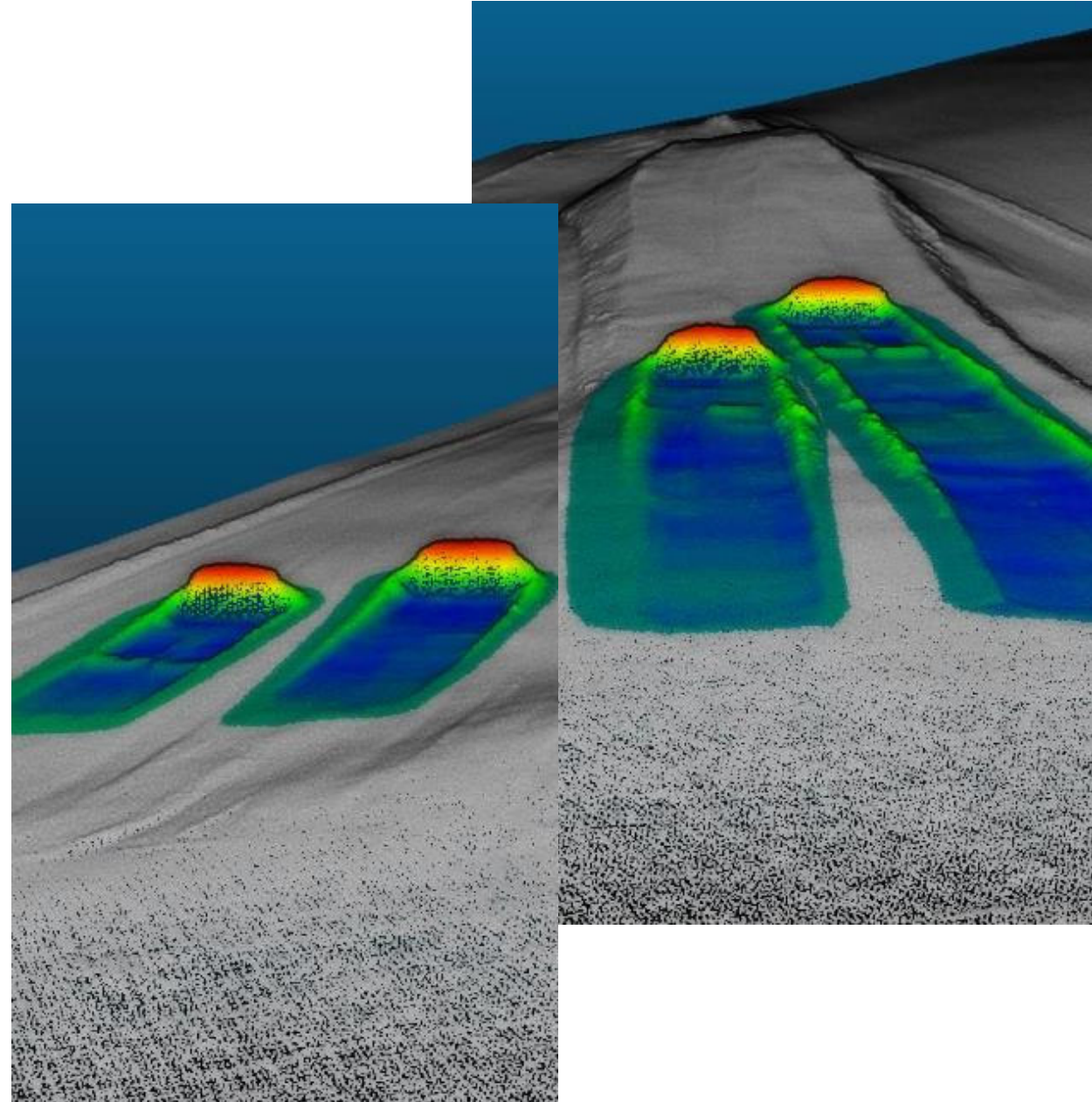
Terrain survey
via laser scan



Relative volume calculation



SNOWsat fleet management





**SIMPLY
RED**

Cabin



Typical PistenBully



Safety for the driver



Optimum all-round visibility





**SIMPLY
RED**

Cabin



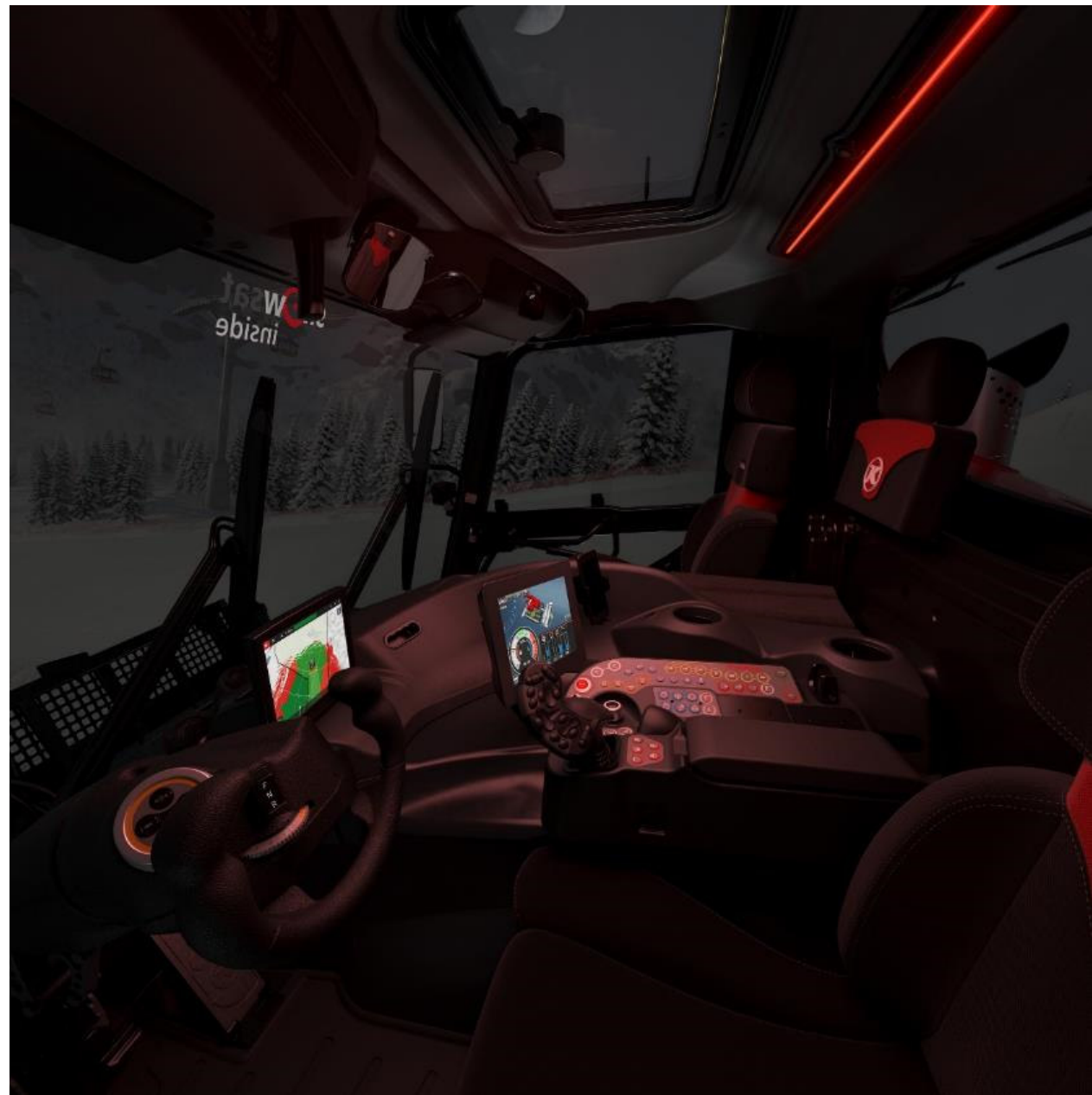
Comfortable and ergonomic



Great sense of space



**Modern and fatigue-free
workplace**





**SIMPLY
RED**

Highest pushing, grooming and climbing performance -

- ✓ **5th running axle** for better traction (patent) – supporting surface reduces ground pressure / m²
- ✓ **9% more track cleats** for maximum traction: 12 cleats more on the tracks, 6 of them in the snow
- ✓ **Balanced position** of the vehicle (powerful engine close to center) gives a very good grip/traction
- ✓ **Combination of intuitive joystick, PistenBully blade and performance is unbeatable**
- ✓ **Optimized drive tuning**
 - ✓ **Agility and dynamic behavior**
 - ✓ **Very good manouvreability by big hydraulic pumps**

Drive

SIMPLY STRONG





**SIMPLY
RED**

SlopeTracer



Exact contour tracking



Operator relief through
uphill – downhill compensation



Optimal slope quality
in any terrain





**SIMPLY
RED**

AutoTracer



Easy steerability under all slope conditions (support)



Maximum track stability



Optimum tracking behavior of the tiller for best slopes



**SIMPLY
RED**

AutoWinch & ActiveWinch



Optimum ratio of tractive force and traction



Intelligent assistance system for fatigue-free work



Perfect tracking stability and steerability



PistenBully 800 - Moves borders

**SIMPLY
RED**

Winch:
AutoWinch / Active Winch

LiDAR on demand

◀ NEU!

New cab design:
LED lighting / comfort seat

◀ NEU!

Equipment Carrier:
**SlopeTracer /
AutoTracer**

Latest operating
concept:
**iTerminal /
4 axes joystick/
armrest**

New chassis:
**5 running axles,
new main frame,
stronger axles**

◀ NEU!

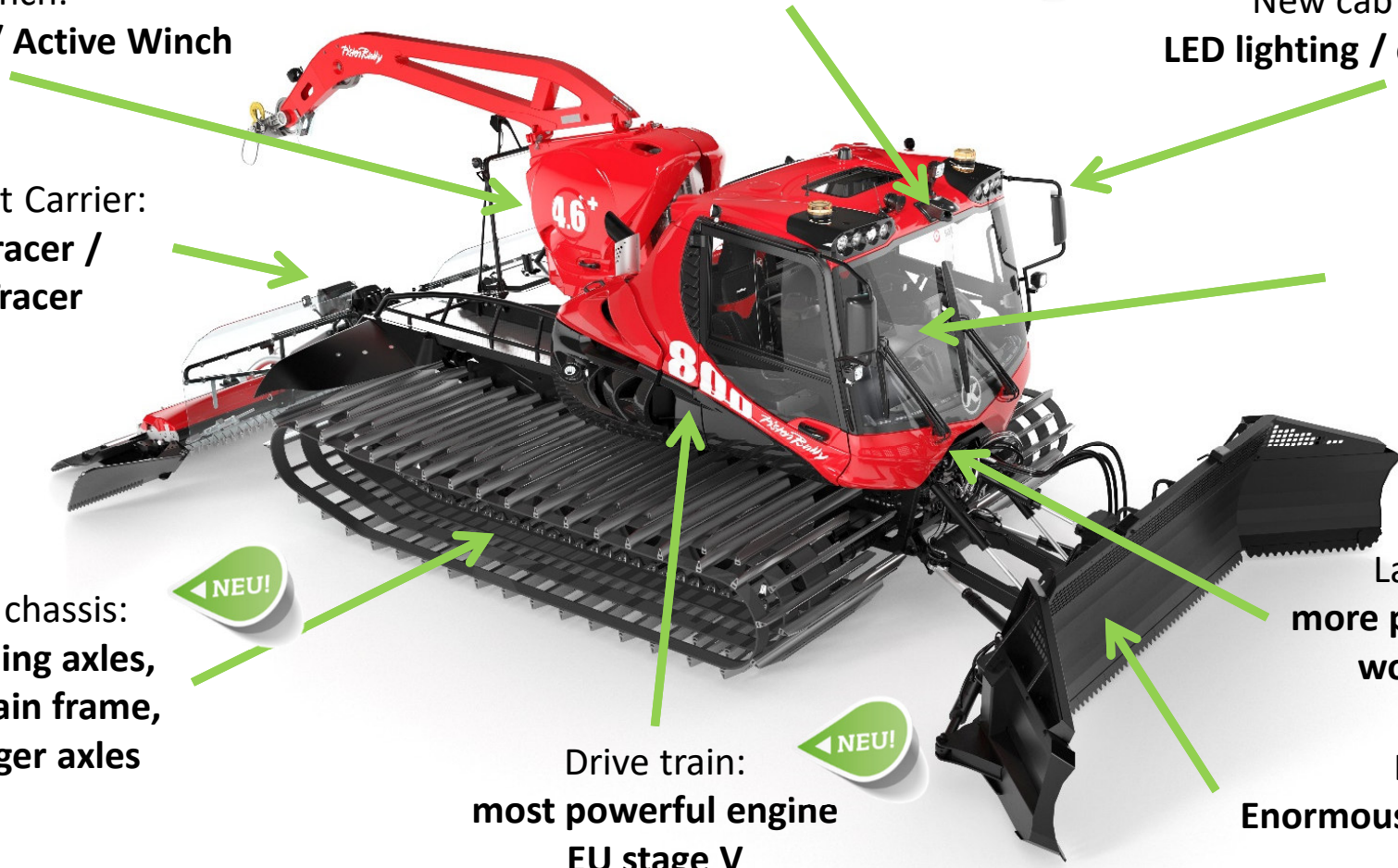
Drive train:
**most powerful engine
EU stage V**

◀ NEU!

Latest hydraulics:
**more precise proportional
working hydraulics**

Largest blade:
Enormous pushing performance

◀ NEU!



SIMPLY STRONG

- ✓ > 15 liters engine
- ✓ > 612 hp and
- ✓ 2900 Nm torque

SIMPLY EFFICIENT

- ✓ 7% more area output
- ✓ 9% fuel savings per m² of snow
- ✓ 40% more snow removal

SIMPLY RED

- ✓ Superior technology
- ✓ Assistance systems and
- ✓ Everything from one source

**SIMPLY
RED**

The PistenBully 800 fits the times and sets new standards!



**SIMPLY
RED**

**Snow depth
measurement**

SIMPLY EFFICIENT



**Up to 20 % savings in slope
construction**



Uniform slope structure



**Up to 20 % time savings
of slope maintenance**



**SIMPLY
RED**

**Predictive snow depth
measurement**

SIMPLY EFFICIENT



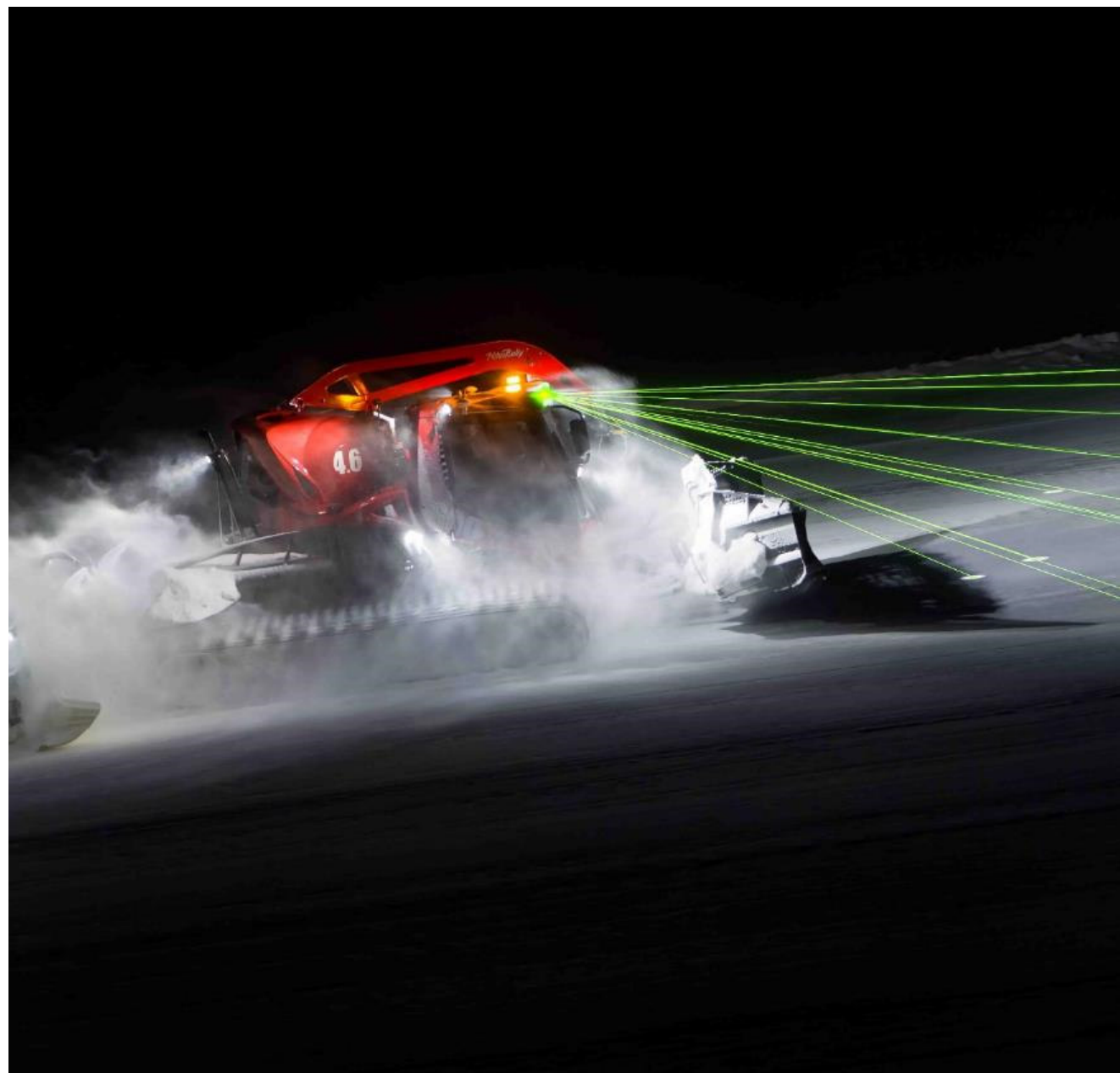
Working with foresight

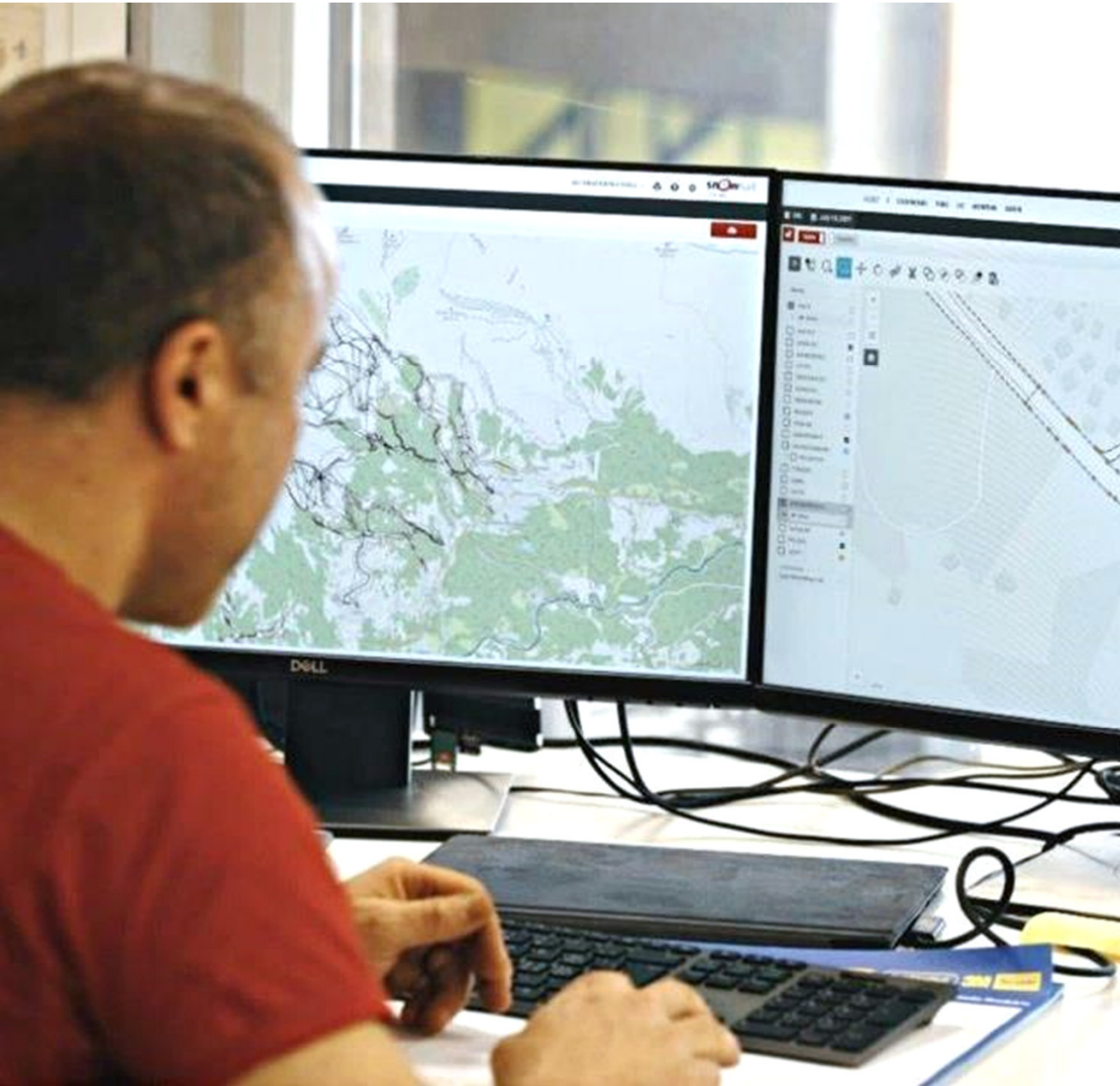


Reduced crossings



**Approx. 15 % additional
time savings**





**SIMPLY
RED**

Fleet Management

SIMPLY EFFICIENT



**Transparency about
machine usage**



Full control of fleet costs



**Long-term optimization
of the vehicle deployment**



**SIMPLY
RED**

Driver training

SIMPLY EFFICIENT



Increase productivity



Reduce operating costs



Motivate employees

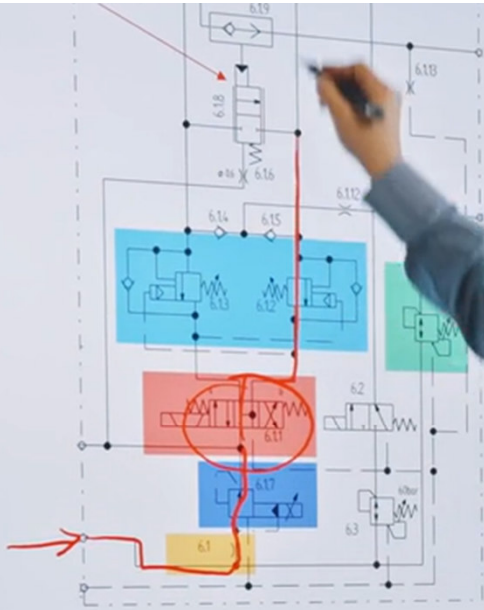


tor und reduziert

ern eine
sition des

ehrichtung der
schwindigkeit.

ehen der Winde
(it)



PowerBully PowerBully ReachTech snOWsat PR ACADEMY COMPOSITES

QUALITÄT
KOSTEN F

RAINING
EFFIZIEN
URCEN
EMAN

Einsteige
line- und F



**SIMPLY
RED**

Technical training

SIMPLY EFFICIENT



Expand knowledge



**Increase machine
availability**



**Solve problems
independently**



**SIMPLY
RED**

PistenBully Portfolio



Solution-oriented



Universally applicable



Reliable



PistenBully 800



PistenBully 600



PistenBully 600 E+



PistenBully 100



PistenBully 400



**SIMPLY
RED**

Snow portfolio



**Maintain/Webshop/
Service&parts availability**



**Holistic approaches to
solutions**



**Modularity for
more efficiency**



Long-term success





Current customer challenges

Ecological sustainability

- **Climate changes** are noticeable for everyone through **warm weather periods** and **weather extremes**
- **Protection of the environment** and **natural resources** is already partly **part of the corporate strategy** of the ski resorts
- **Reducing CO2 footprint**

Staff availability & employee turnover

- In general, there is **low availability of skilled workers**
- In terms of slope management: Especially at the beginning of the season during slope construction
 - Late onset of winter: seasonal workers not available until later

Economic sustainability

- **Warm weather periods & lack of precipitation** sometimes require production of more technical snow
- **Shorter snow making phases** often in the **limit temperature range**
 - Technical snow must be positioned in the right places and in the shortest possible time
 - Larger volumes at high density must be shifted
- **Rising costs for resources** such as fuel
- **Profitability** despite rising **operating costs**



SIMPLY RED



KÄSSBOHRER GELÄNDEFahrZEUG AG