

SNOW MAKERS

SMART SNOW7

Real-Time, Data Driven Snowmaking Software



Connect, Monitor, and Control Like Never Before.

SmartSnow7 gives you and your team complete control of your entire snowmaking infrastructure anytime, anywhere.

Maximize your efficiency and produce high-quality snow by seizing critical snowmaking windows.

Connect and manage in real-time your:

- Snow Machines
- Air Lines
- Water Lines
- Power Lines
- Hydrants
- Pedestals



Now available from any device, including iOS, Android, and web browsers.

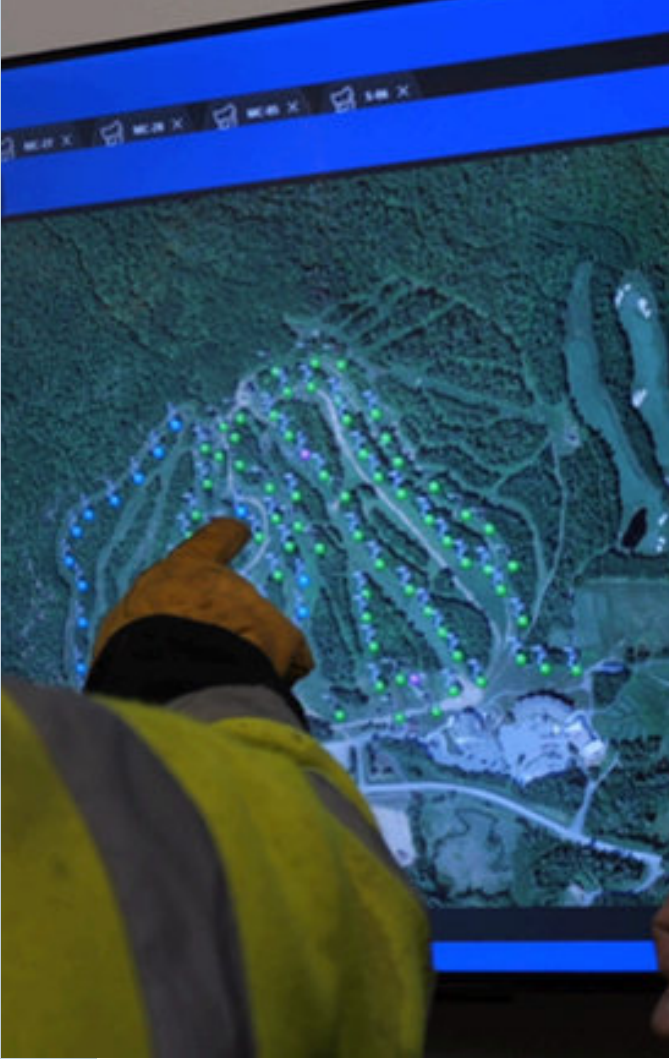
Key New Features of **SmartSnow7**

- Implements client-server architecture.
- Enables access and control software from multiple local PCs and cloud devices.
 - Android phones and tablets.
 - iOS phones and tablets.
 - Web client.
- Supports multi-tab windows and split-screen operation of the desktop client software.

- Delivers fully Georeferenced satellite imagery with GPS coordinates for machine and infrastructure mapping.
- Facilitates communication via cross-platform user chat and device/machine notes.
- Supports configuration management of key infrastructure, including:
 - Water lines
 - Air lines
 - Power lines
 - Hydrants
 - Pedestals
- Allows users to set priorities for flow rate, totalized flow volume, electrical current, and snow production depth.
- Integration of pumping systems in mobile applications.

- Enables the generation of custom reports in multiple formats.
- Custom scheduling of automatic system report emails.

- Provides software integration with SnowSat, Pistebully/Prinoth snow depth, and Latitude90.
- Historical data logs are available for integration with 3rd party applications such as DOMO.



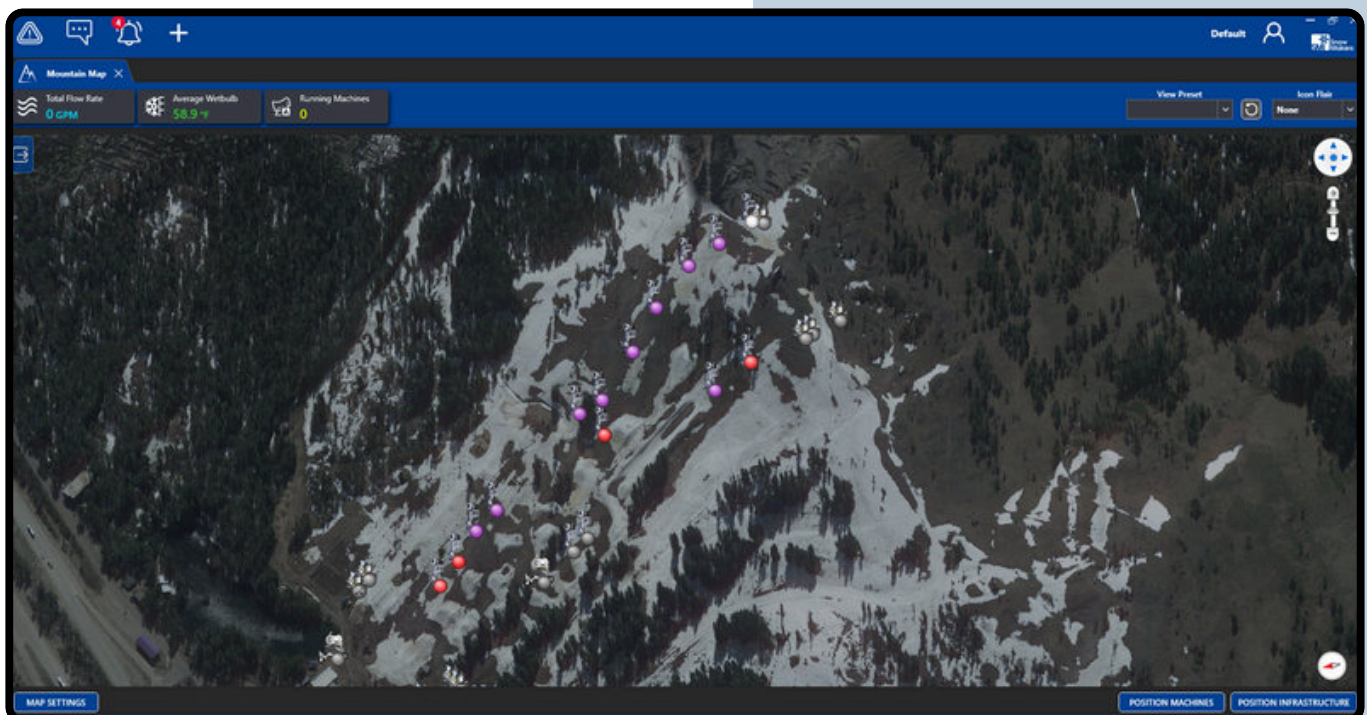
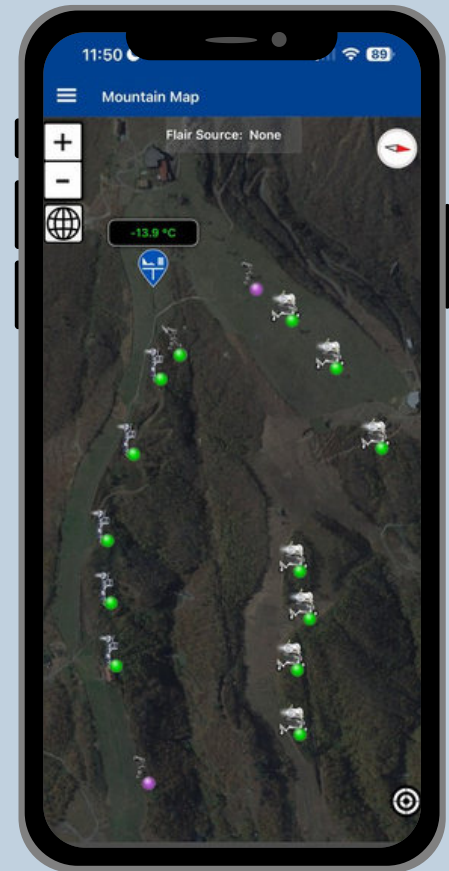
Mapping & Location

Fully Georeferenced Satellite Imaging:

- Use satellite imagery to view your equipment with GPS-accurate positioning.

GPS & Location Services:

- Use your phone's GPS to automatically position portable equipment and accurately document the locations of fixed-position equipment on your hill.



Pump House Integration

System Information

OBS Pump Station

Flow Rate, Discharge Pressure, Suction Pressure

OBS F1, OBS F2, OBS F3, OBS F4, OBS F5

Manual VFD Speed: 15%

TRENDING

Ober Gatlinburg

Split Screen View

Check Equipment Status on Map

Mobile All Hydrant Tracking

Mobile Single Hydrant Tracking

Mobile Weather Station Tracking

Mobile Single Machine View

Set Priorities & Constraints

Priority-Based Water Management:

- Set hydrant priorities (#1,#2,#3, etc.) and SS7 automatically maximizes water usage by running the highest priority hydrant first, then moving down the list.

Setting Constraints:

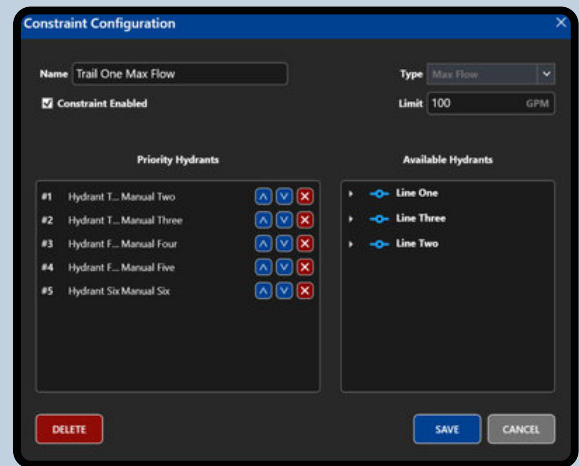
- Set maximum limits for flow, current, and volume. SS7 will optimize performance while never exceeding your constraints.

Real-Time Progress Tracking:

- Monitor each hydrant's water volume progress towards its target goals (ex., 300,000 gallons), view total gallons used and operating hours.

Oscillation:

- Control horizontal oscillation and vertical tilt adjustments.



Hydrant	Machine	Status	Wettable	Flow Rate	Current	Hours	Volume Progress	Volume Target	Target Progress
Castle Hours: 416.0 Volume Progress: 758,516 Gal Volume Target: 2,400,000 Gal									
13	L 4 Standard PoleCat	Offline	-	-	-	66.0	95,074 Gal	300,000 Gal	31%
14	L 5 Standard PoleCat	Offline	-	-	-	34.0	83,565 Gal	300,000 Gal	28%
15	-	-	-	-	-	0.0	0 Gal	300,000 Gal	0%
16	L10 Standard Polecat	Offline	-	-	-	59.0	81,194 Gal	300,000 Gal	27%
17	L11 Standard Polecat	Offline	-	-	-	56.0	98,503 Gal	300,000 Gal	33%
18	L12 Standard Polecat	Offline	-	-	-	60.0	105,717 Gal	300,000 Gal	35%
19	L13 Super Polecat	Offline	-	-	-	62.0	129,265 Gal	300,000 Gal	43%
24	L14 Super Polecat	Offline	-	-	-	63.0	153,194 Gal	300,000 Gal	51%
Cub Way Hours: 58.0 Volume Progress: 111,027 Gal Volume Target: 500,000 Gal									
28	-	-	-	-	-	0.0	0 Gal	250,000 Gal	0%
31	L26 Super Polecat	Offline	-	-	-	58.0	111,027 Gal	250,000 Gal	44%
Mogul Edge Hours: 143.0 Volume Progress: 254,723 Gal Volume Target: 1,200,000 Gal									
22	L35 Super Polecat	Offline	-	-	-	21.0	33,142 Gal	200,000 Gal	17%
23	L36 Super Polecat	Offline	-	-	-	0.0	0 Gal	200,000 Gal	0%
24	L37 Super Polecat	Offline	-	-	-	30.0	110,548 Gal	200,000 Gal	55%
25	L38 Super Polecat	Offline	-	-	-	24.0	38,956 Gal	200,000 Gal	19%
26	L39 Super Polecat	Offline	-	-	-	24.0	37,654 Gal	200,000 Gal	19%
27	L40 Super Polecat	Offline	-	-	-	34.0	56,469 Gal	200,000 Gal	28%

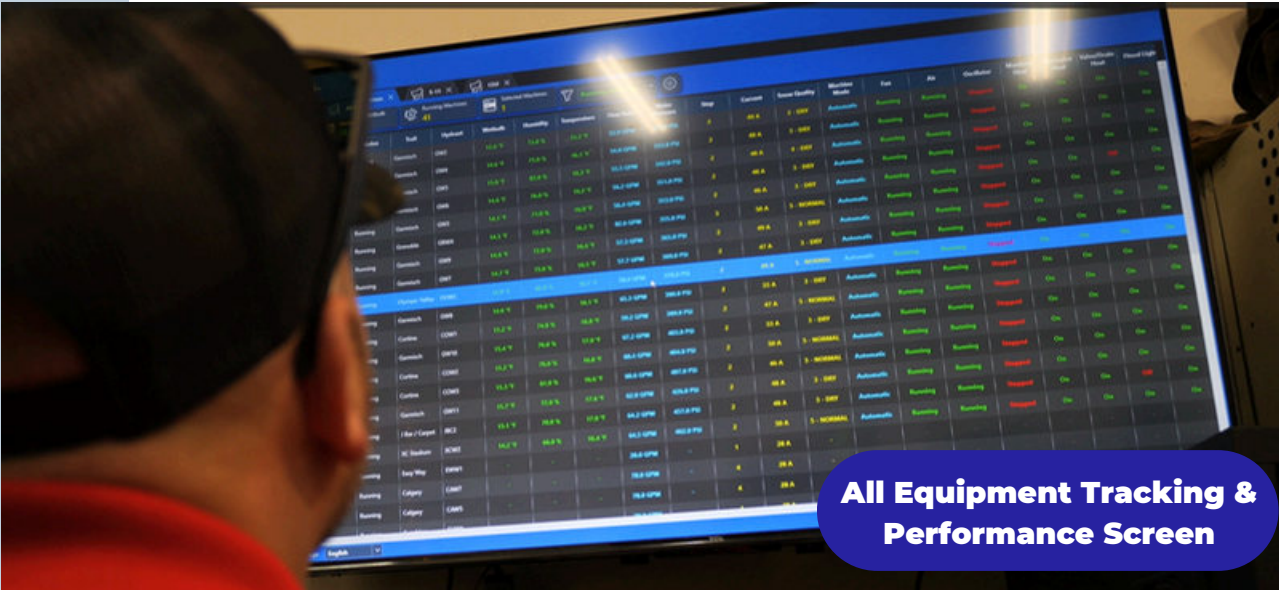
Hydrant Screen



Oscillation Screen



Single Machine Settings & Performance Screen



All Equipment Tracking & Performance Screen

Reports & Team Communication

Custom Reports:

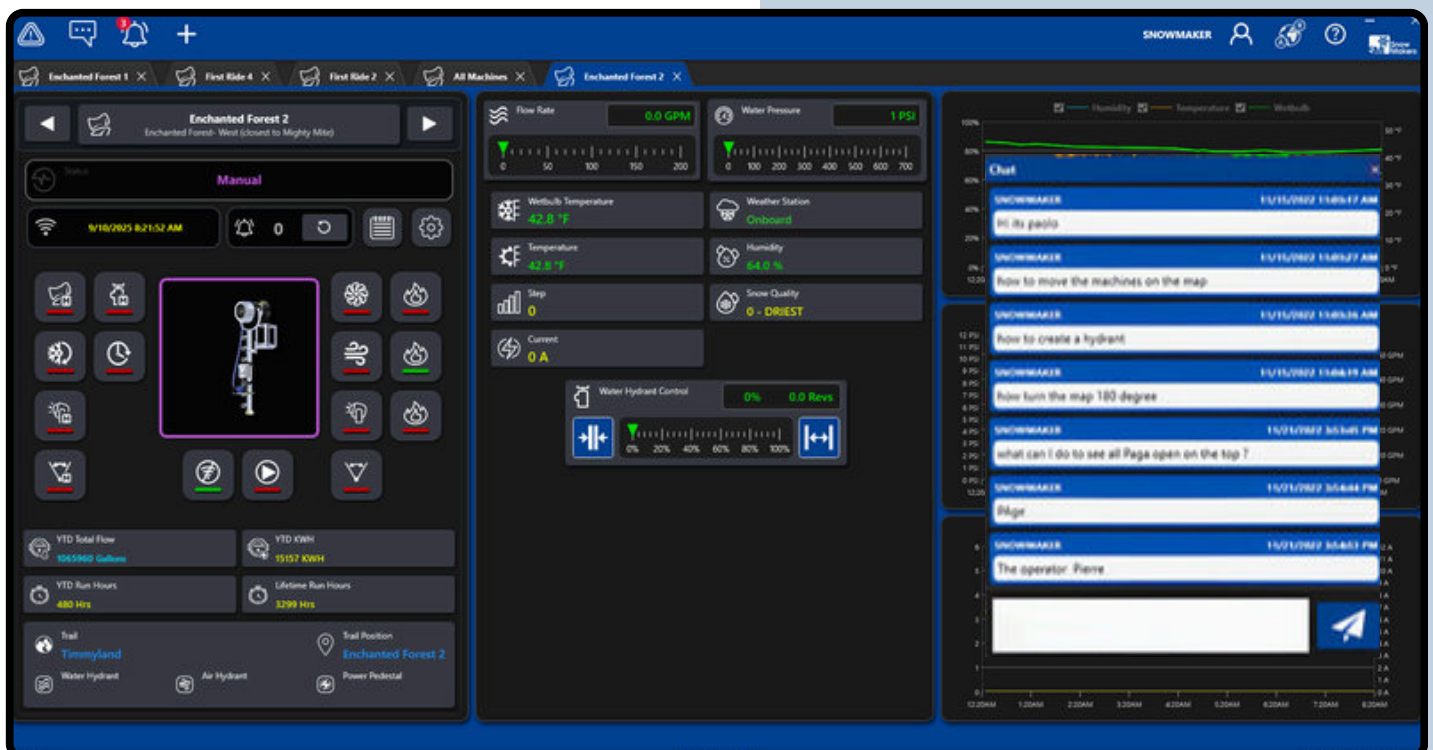
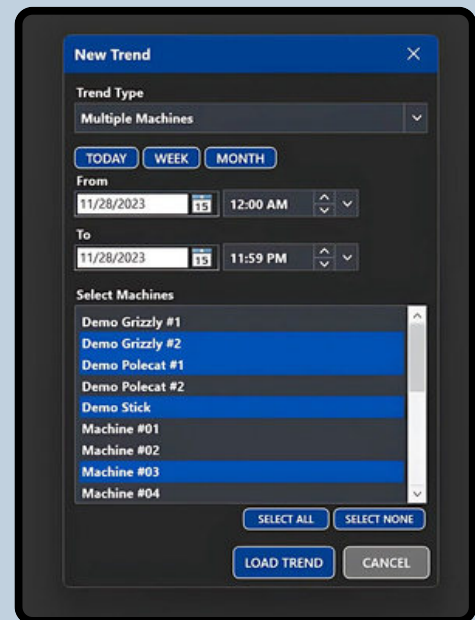
- Create custom reports for multiple pieces of equipment across custom timeframes.

Schedule and Download Reports:

- Set scheduled reports to be sent to specific users.
- Download reports in multiple formats.

Team communication:

- Leave detailed shift notes and summaries.
- Chat with your team in real time.
- Assign different access levels to give users certain permissions.
 - Unlimited users.



Chat ✕

SNOWMAKER 8/22/2025 12:51:35 PM

Tweaked Machine #10's angle a few degrees to the left, snow was piling too much on the right.

📤

SmartSnow7 Report
Single Weather Station Detailed Page
12/7/2024 12:00 PM - 12/11/20

Machine #09

Average WetBull: 34.7°F Peak WetBull: 43.4°F Low WetBull: 24.9°F
 Average Temperature: 38.2°F Peak Temperature: 43.9°F Low Temperature: 24.9°F
 Average Humidity: 73% Peak Humidity: 94% Low Humidity: 47%

Time/Temp	WetBull	Temperature	Humidity	Wind Speed	Wind Direction
12/8/2024 12:00 AM	40.1	45.9	50.0	0.0	0
12/8/2024 12:30 AM	40.0	46.1	50.0	0.0	0
12/8/2024 1:00 AM	39.9	45.9	50.0	0.0	0
12/8/2024 1:30 AM	39.7	45.5	50.0	0.0	0
12/8/2024 1:45 AM	39.8	45.3	50.0	0.0	0
12/8/2024 1:45 AM	39.8	45.3	50.0	0.0	0
12/8/2024 2:00 AM	39.3	44.9	49.0	0.0	0
12/8/2024 2:30 AM	39.1	44.1	50.0	0.0	0
12/8/2024 2:45 AM	38.9	43.7	50.0	0.0	0
12/8/2024 3:00 AM	39.0	43.7	50.0	0.0	0
12/8/2024 3:30 AM	38.9	43.1	49.0	0.0	0
12/8/2024 3:45 AM	38.8	43.1	49.0	0.0	0
12/8/2024 4:15 AM	38.3	42.4	49.0	0.0	0
12/8/2024 4:30 AM	37.8	41.9	49.0	0.0	0
12/8/2024 4:45 AM	37.8	41.8	50.0	0.0	0
12/8/2024 5:00 AM	37.8	41.8	50.0	0.0	0
12/8/2024 5:15 AM	37.7	41.5	50.0	0.0	0
12/8/2024 5:30 AM	37.8	41.3	50.0	0.0	0
12/8/2024 5:45 AM	37.8	41.3	50.0	0.0	0
12/8/2024 6:00 AM	37.7	41.1	50.0	0.0	0
12/8/2024 6:15 AM	37.8	41.3	50.0	0.0	0
12/8/2024 6:45 AM	38.1	41.8	50.0	0.0	0
12/8/2024 7:15 AM	37.9				
12/8/2024 7:45 AM	37.8				
12/8/2024 8:00 AM	37.8				

Single Weather Station Report

Device Notes ✕

Replace hydrant actuator cable

Assigned To: SNOWMAKER Due By: 8/23/2025 12:00:00 AM

Author: Default 8/22/2025 12:54:52 PM

Show Completed Notes CLOSE

SmartSnow7 Reporting
Multiple Machine Report
12/9/2024 4:00 PM - 12/13/2024 11:59 PM

Total Volume: 1,621,998 Gallons Total Power: 9,861 KWH Average WetBull: 6.5 °F

Device	Average WetBull	Average Water Pressure	Average Flow	Average Amps
Machine # 39	14.0	313.2	105.4	43.7
Machine #01	-	-	-	-
Machine #02	16.9	299.0	64.0	42.6
Machine #03	-	-	-	-
Machine #04	11.0	264.6	26.1	42.3
Machine #05	13.0	260.5	62.9	42.8
Machine #06	12.9	251.5	62.3	48.1
Machine #07	-	-	-	-
Machine #08	22.9	342.7	58.0	42.6
Machine #09	15.2	366.9	52.8	30.4
Machine #10	-	-	-	-
Machine #100	18.1	252.7	71.3	45.0
Machine #101	22.5	281.9	24.6	27.0
Machine #102	21.8	200.4	35.1	27.1
Machine #103	26.5	325.9	19.2	26.5
Machine #104	22.5	275.2	24.6	27.8
Machine #105	23.2	240.3	33.6	27.1
Machine #106	22.5	243.1	32.7	42.3
Machine #107	22.9	255.4	31.1	45.2
Machine #108	25.6	233.3	28.5	20.5
Machine #109	14.0	308.2	30.8	26.4
Machine #11	28.7	368.7	29.9	41.3
Machine #110	24.1	300.7	21.5	26.3
Machine #111	23.1	341.9	19.8	22.0
Machine #112	-	-	-	-

Multiple Machine Report

New Report ✕

Report Type
Single Machine

DAY MIDNIGHT NOON WEEK MONTH

From
12/9/2024 04:00 PM

To
12/12/2024 04:00 PM

Report Interval
15 Minutes

Select Machine
Machine #09

LOAD REPORT CANCEL

SmartSnow7 Reporting
Multiple Trail Report
12/9/2024 12:00 PM - 12/13/2024

Total Volume: 1,348,889 Gallons Total Power: 9,421 KWH Average WetBull: 5.4 °F

Position	Average WetBull	Average Water Pressure	Average Flow	Average Amps	Total Power
A-Walk - Total Volume: 96,429 Gallons, Total Power: 141 KWH (3 items)					
A-Walk #1	2.8	81.8	22.6	8.8	0
A-Walk #2	2.8	80.4	10.7	8.8	181
A-Walk #3	2.8	81.2	12.8	8.8	0
Admiral's Alley - Total Volume: 851,824 Gallons, Total Power: 5,687 KWH (7 items)					
AA#1	8.2	138.7	7.8	8.8	808
AA#2	8.4	134.9	18.1	10.8	1217
AA#3	7.7	189.9	26.8	18.8	801
AA#4	8.7	120.3	8.8	10.8	182
AA#5	8.0	112.8	8.8	10.8	708
AA#6	8.0	110.1	8.8	11.1	704
AA#8	8.4	81.4	11.8	11.8	842
B-Club - Total Volume: 127,632 Gallons, Total Power: 917 KWH (9 items)					
B-Club #10	2.8	33.9	18.8	8.8	0
B-Club #11	2.8	41.1	11.8	8.8	0
B-Club #2	2.8	42.8	21.8	8.7	0
B-Club #3	2.7	60.3	13.6	8.4	0
B-Club #6	2.8	59.2	18.8	8.8	0
B-Club #8	2.8	52.4	15.4	8.2	289
B-Club #7	2.8	48.8	11.8	8.7	284
B-Club #5	2.8	48.7	12.2	8.2	202
B-Club #3	2.8	47.1	12.6	8.8	218
Badger Street - Total Volume: 229,528 Gallons, Total Power: 1,136 KWH (4 items)					
BS	8.8	142.1			
BS #1	8.3	123.2			

Multiple Trail Report



Ready to start? Let's upgrade your system.

Snow Machines Inc.
www.snowmakers.com
1512 Rockwell Dr, Midland, MI 48642
P : 1 (989) 631 -6091

